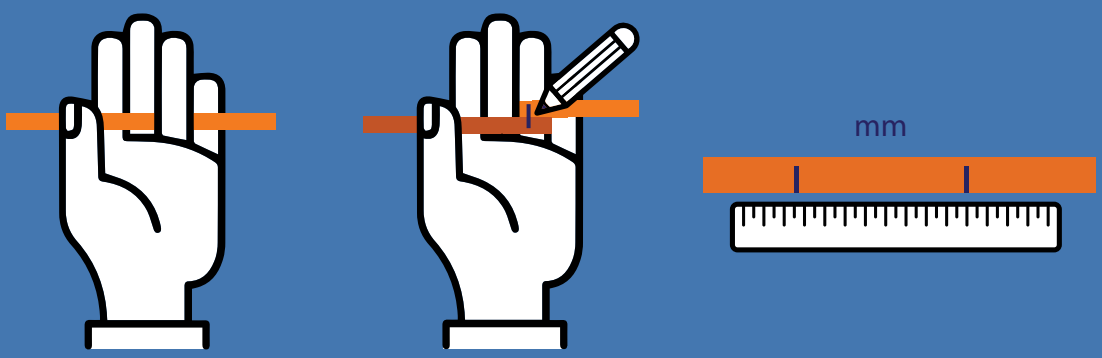




## FINDING YOUR RING SIZE

### METHOD 1 If You Don't Have A Ring

What you need: A thin strip of paper, a pen and a ruler



1. Wrap a thin strip of paper around your finger.
2. Mark the meeting point with a pen.
3. Measure the length with a ruler.

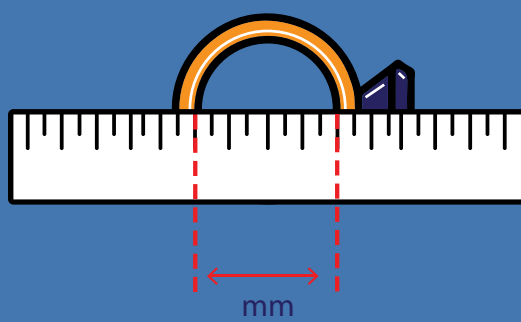
You now have the circumference of your ring, use the following chart to determine your ring size.

Ring size (Indian)	Circumference (In mm)	Ring size (Indian)	Circumference (In mm)
6	45.9	19	59.1
7	47.1	20	60.0
8	48.1	21	60.9
9	49.0	22	61.9
10	50.0	23	62.8
11	50.9	24	63.8
12	51.8	25	64.7
13	52.8	26	66.0
14	54.0	27	66.9
15	55.0	28	67.9
16	55.9	29	69.1
17	56.9	30	70.1
18	57.8		

Pro Tip: If your measurement falls between two ring sizes, it is recommended that you choose the larger size.

### METHOD 2 If You Have A Ring

What you need : A ring and a ruler.



1. Place the ring on the ruler.
2. Measure the largest distance between the inner edges of your ring.

You now have the inner diameter of your ring, use the following chart to determine your ring size.

Ring size (Indian)	Diameter (In mm)	Ring size (Indian)	Diameter (In mm)
6	14.6	19	18.8
7	15.0	20	19.1
8	15.3	21	19.4
9	15.6	22	19.7
10	15.9	23	20.0
11	16.2	24	20.3
12	16.5	25	20.6
13	16.8	26	21.0
14	17.2	27	21.3
15	17.5	28	21.6
16	17.8	29	22.0
17	18.1	30	22.3
18	18.4		

Pro Tip: If your measurement falls between two ring sizes, it is recommended that you choose the larger size.